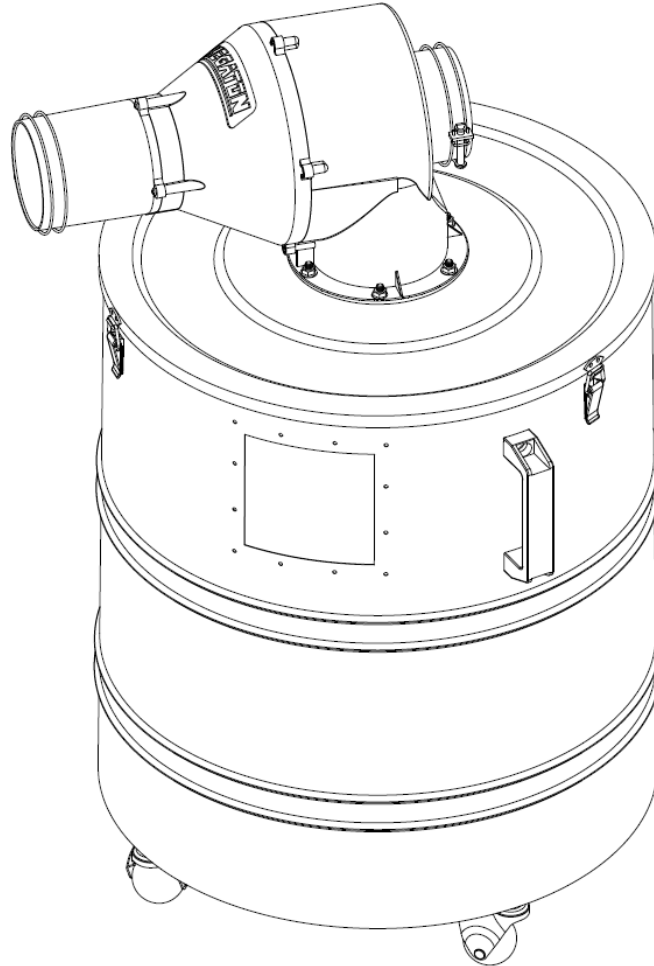


# OPERATION MANUAL & PARTS LIST

## MODEL: CPS-146MD



### WARNING :

**The Operator must thoroughly Read and understand this Manual before operating the Dust collector or commencing Any servicing. Care should be Taken to follow all safety rules And warning instructions.**

<b>CAUTION</b>	
	Read and understand operator's manual before using this machine. Failure to follow operating instructions could result in death or serious injury.
	<b>Loud noise hazard.</b> Ear protection is required when operating this machine.
	<b>Flying objects hazard.</b> Eye protection is required when operating this machine.
	Respiratory hazard. Wear approved respirator in this area.

**READ THIS MANUAL CAREFULLY BEFORE ASSEMBLY, TESTING & OPERATING**

REVISION 1– Dec. 2021

# CONTENTS

IMPORTANT SAFETY RULES-----	2
SPECIFICATIONS-----	3
UNPACKING & CHECKING CONTENTS-----	4
CONTENTS OF PARTS BAG-----	5
ASSEMBLY INSTRUCTION-----	6
EXPLODED DIAGRAM-----	7
PARTS LIST-----	7

- **WARNING!!!**

Please read this manual carefully before assembly, testing and operating.

- **WARNING!!!**

Do not operate this unit until hose or pipe is installed onto the dust port.

# IMPORTANT SAFETY RULES

Wood working can be dangerous if safe and proper operating procedures are not followed. As with all machinery, there are certain hazards involved with the operation of the product. Using the machine with respect and caution will considerably lessen the possibility of personal injury. However, if normal safety precautions are overlooked or ignored, personal injury to the operator may result.

Safety equipment such as guards, push sticks, hold-downs, feather boards, goggles, dust masks and hearing protection can reduce your potential for injury. But even the best guard won't make up for poor judgment, carelessness or inattention. Always use common sense and exercise caution in the workshop. If a procedure feels dangerous, don't try it. Figure out an alternative procedure that feels safer. REMEMBER: Your personal safety is your responsibility.

## **WARNING: FAILURE TO FOLLOW THESE RULES MAY RESULT IN SERIOUS PERSONAL INJURY**

1. **FOR YOUR OWN SAFETY, READ INSTRUCTION MANUAL BEFORE OPERATING THE TOOL.** Learn the tool's application and limitations as well as the specific hazards peculiar to it.
2. **KEEP GUARDS IN PLACE** and in working order
3. **ALWAYS WEAR EYE PROTECTION**
4. **GROUND ALL TOOLS.** If tool is equipped with three-prong plug, it should be plugged into a three-hole electrical receptacle. If an adapter is used to accommodate a two-prong receptacle, the adapter plug must be attached to a known ground. Never remove the third prong.
5. **REMOVE ADJUSTING KEYS AND WRENCHES.** Form habit of checking to see that keys and adjusting wrenches are removed from tool before turning it "ON".
6. **KEEP WORK AREA CLEAN.** Cluttered areas and benches invite accidents.
7. **DON'T USE IN DANGEROUS ENVIRONMENT.** Don't use power tools in damp or wet locations, or expose them to rain. Keep work area well lighted.
8. **KEEP CHILDREN AND VISITORS AWAY.** All children and visitors should be kept a safe distance from work area.
9. **MAKE WORKSHOP CHILDPROOF** – with padlocks, master switches, or by removing starter keys.
10. **DON'T FORCE TOOL.** It will do the job better and be safer at the rate for which it was designed.
11. **USE RIGHT TOOL.** Don't force tool or attachment to do a job for which it was not designed.
12. **WEAR PROPER APPAREL.** No loose clothing, gloves, neck-ties, rings, bracelets, or other jewelry to get caught in moving parts. Non-slip footwear is recommended. Wear protective hair covering to contain long hair.
13. **ALWAYS USE SAFETY GLASSES.** Wear safety glasses. Everyday eyeglasses only have impact resistant lenses; they are not safety glasses. Also use face or dust mask if cutting operation is dusty.
14. **SECURE WORK.** Use clamps or a vise to hold work when practical. It's safer than using your hand and frees both hands to operate tool.
15. **DON'T OVERREACH.** Keep proper footing and balance at all times.
16. **MAINTAIN TOOLS IN TOP CONDITION.** Keep tools sharp and clean for best and safest performance. Follow instructions for lubricating and changing accessories.
17. **DISCONNECT TOOLS** before servicing and when changing accessories such as blades, bits, cutters, etc.
18. **USE RECOMMENDED ACCESSORIES.** The use of accessories and attachments not recommended by us may cause hazards or risk of injury to persons.
19. **REDUCE THE RISK OF UNINTENTIONAL STARTING.** Make sure switch is in "OFF" position before plugging in power cord.
20. **NEVER STAND ON TOOL.** Serious injury could occur if the tool is tipped or if the cutting tool is accidentally contacted.
21. **CHECK DAMAGED PARTS.** Before further use of the tool, a guard or other part that is damaged should be carefully checked to ensure that it will operate properly and perform its intended function – check for alignment of moving parts, binding of moving parts, breakage of parts, mounting, and any other conditions that may affect its operation. A guard or other part that is damaged should be properly repaired or replaced.
22. **DIRECTION OF FEED.** Feed work into a blade or cutter against the direction of rotation of the blade or cutter only.
23. **NEVER LEAVE TOOL RUNNING UNATTENDED. TURN POWER OFF.** Don't leave tool until it comes to a complete stop.
24. **DRUGS, ALCOHOL, MEDICATION.** Do not operate tool while under the influence of drugs, alcohol or any medication.
25. **MAKES SURE TOOL IS DISCONNECTED FROM POWER SUPPLY** while motor is being mounted, connected or reconnected.
26. **WARNING:** The dust generated by certain woods and wood products can be injurious to your health. Always operate machinery in well-ventilated areas and provide for proper dust removal. Use wood dust collection systems whenever possible.

## Specifications:

**Model: CPS-146MD**

**Dust Port -----4”**

**Overall Dimensions -----565x508x867mm**

**Packing Size-----560 x 560x 635mm**

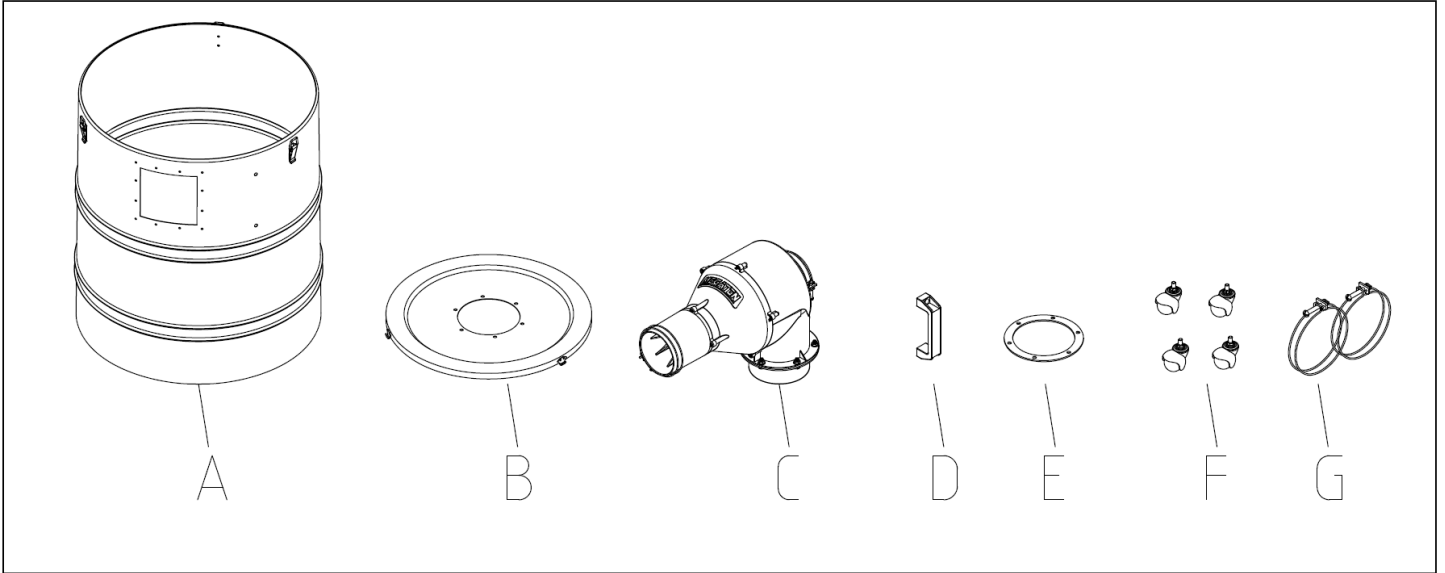
**N.W. ----- 11.6 KGS**

**G.W. -----16.8 KGS**

**CUFT----- 7’**

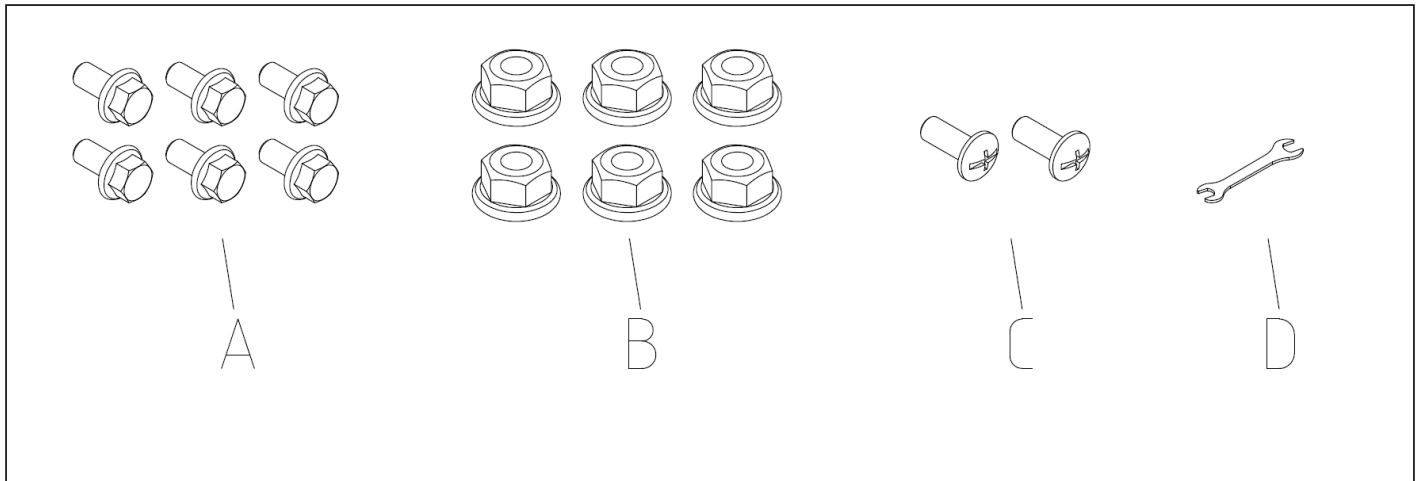
**UNPACKING & CHECKING CONTENTS:**

**CPS-146MD**



<b>A : Drum</b>	<b>B : Drum Lid</b>	<b>C : Housing</b>
<b>D : Handle</b>	<b>E : Gasket</b>	<b>F : Ball Wheel</b>
<b>G : Clamp</b>		

# CONTENTS OF PARTS BAG CPS-146MD:



<u>NO.</u>	<u>Description</u>	<u>Specification</u>	<u>Q'TY</u>	<u>Part List No.</u>
<b>A</b>	<b>Flange Bolts</b>	<b>1/4"x3/4"</b>	<b>6</b>	<b>NO. 6</b>
<b>B</b>	<b>Flange Nut</b>	<b>1/4"</b>	<b>6</b>	<b>NO.3</b>
<b>C</b>	<b>Flat Head Screw</b>	<b>1/4"x1/2"</b>	<b>2</b>	<b>NO. 9</b>
<b>D</b>	<b>Open Wrench</b>	<b>10x12</b>	<b>1</b>	<b>NO.11</b>

# ASSEMBLY INSTRUCTION

## STEP 1-1.

Assemble Ball Wheels (NO.10) on the Drum (NO.7)

## STEP 1-2.

Assemble the Handle (NO.8) on the Drum (NO.7) and tighten by Flat Head Screw (NO.9).

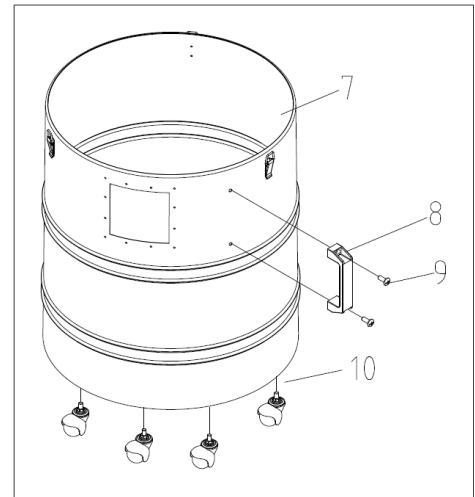


Fig1

## STEP 2-1.

Tear off the back adhesive on Gasket (NO.4) and stick on the Drum Lid (NO.5).

## STEP 2-2.

Assemble the Housing (NO.1) on the Drum Lid (NO.5) and tighten by Flange Bolts (NO.6) and Flange Nuts (NO.3).

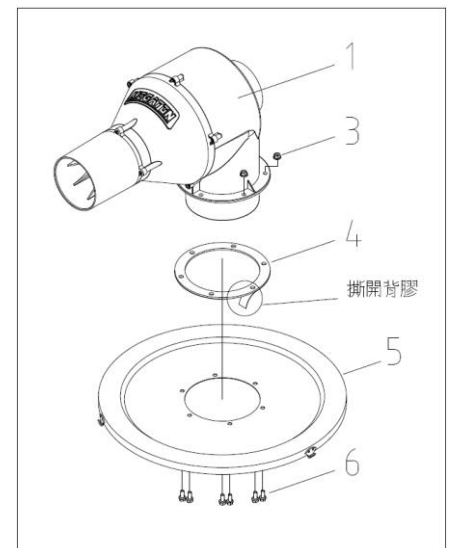


Fig2

## STEP 3-1.

Assemble the Drum Lid with Housing (NO.1) on the Drum (NO.7), lock the hook.

## STEP 3-2.

Use Hose Clamps (NO.2) to tighten the hose.

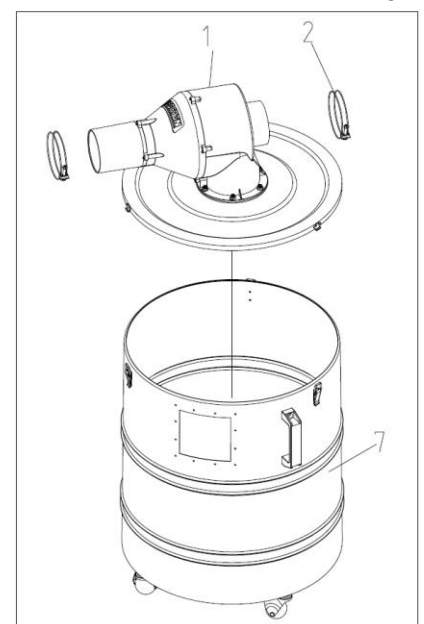
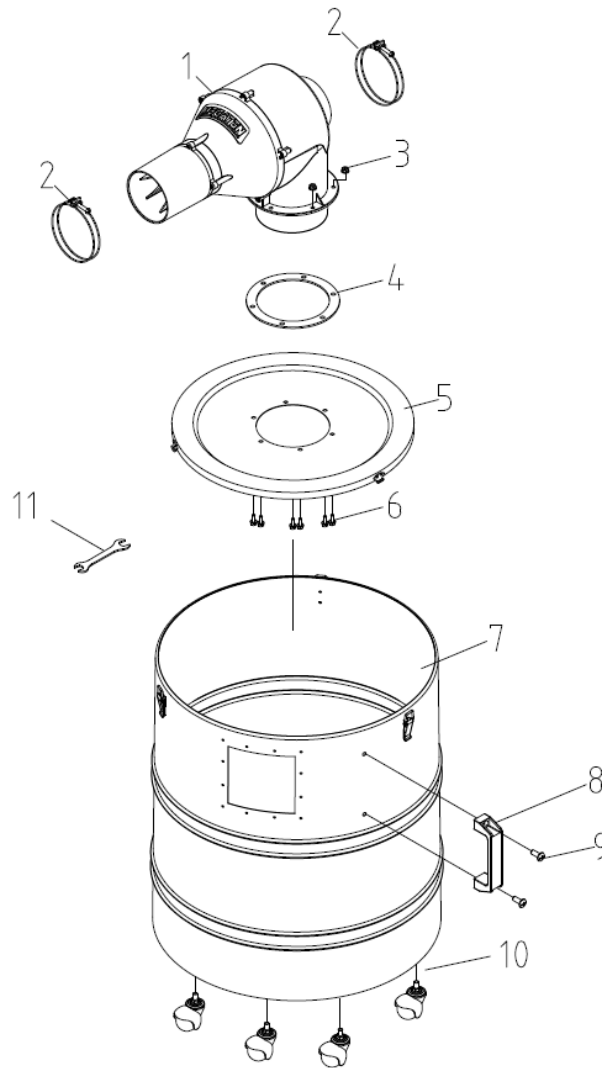


Fig3

# EXPLODED DIAGRAM: CPS-146MD



<u>Ref.</u>	<u>Part No.</u>	<u>Description</u>	<u>Specificatio</u>	<u>Q'TY</u>	<u>Ref.</u>	<u>Part No.</u>	<u>Description</u>	<u>Specific</u>	<u>Q'TY</u>
1	CPS146MD-1	Housing		1	7	CPS146MD-7	Drum		1
2	CPS146MD-2	Clamp	4"	2	8	CPS146MD-8	Handle		1
3	CPS146MD-3	Flange Nut	1/4"	6	9	CPS146MD-9	Flat Head Screw	1/4"x1/2"	2
4	CPS146MD-4	Gasket		1	10	CPS146MD-10	Ball Wheel		4
5	CPS146MD-5	Drum Lid		1	11	CPS146MD-11	Open Wrench	10X12	1
6	CPS146MD-6	Flange Bolts	1/4"x3/4"	6					